

# Do you care what happens at the Crusher Lot?

The Crusher Lot is one of the few areas in Arlington that has been allowed to remain as a natural woodland refuge for local wildlife and residents to enjoy. It hosts rabbits, racoons, turkeys, hawks, owls, foxes, coyote and (occasionally) deer. Many local residents and dog owners use its walking trails, along with Ottoson and preschool students.

As a nearby resident, you may have noticed tree cutting and trail making in the woods over the last year, along with the mountain bike riders responsible for it. (Please note: this work was done without the Town's permission.)

Yet, you may not know that a proposal to develop the Crusher Lot into a mountain bike park was presented to the Park and Recreation Commission (the owner and manager of the property) on July 14th. The Commission has already established a Working Group to study and make recommendations on the proposal. We want to ensure that impacted neighbors are informed about this.

We are a group of your neighbors who feel that the Crusher Lot is too small to absorb engineered mountain biking tracks and trails (and the increased presence of mountain bikes) without profound ecological and quality of life impact on the woodland, the neighborhood, the walkers and students who currently enjoy the woods. And we don't want to lose this rare woodland refuge. Please join us and get involved. **We need your help.**

*Did you know there's a proposal to transform it into a mountain bike park?*



*walking trail and mountain bike trail in the Crusher Lot*

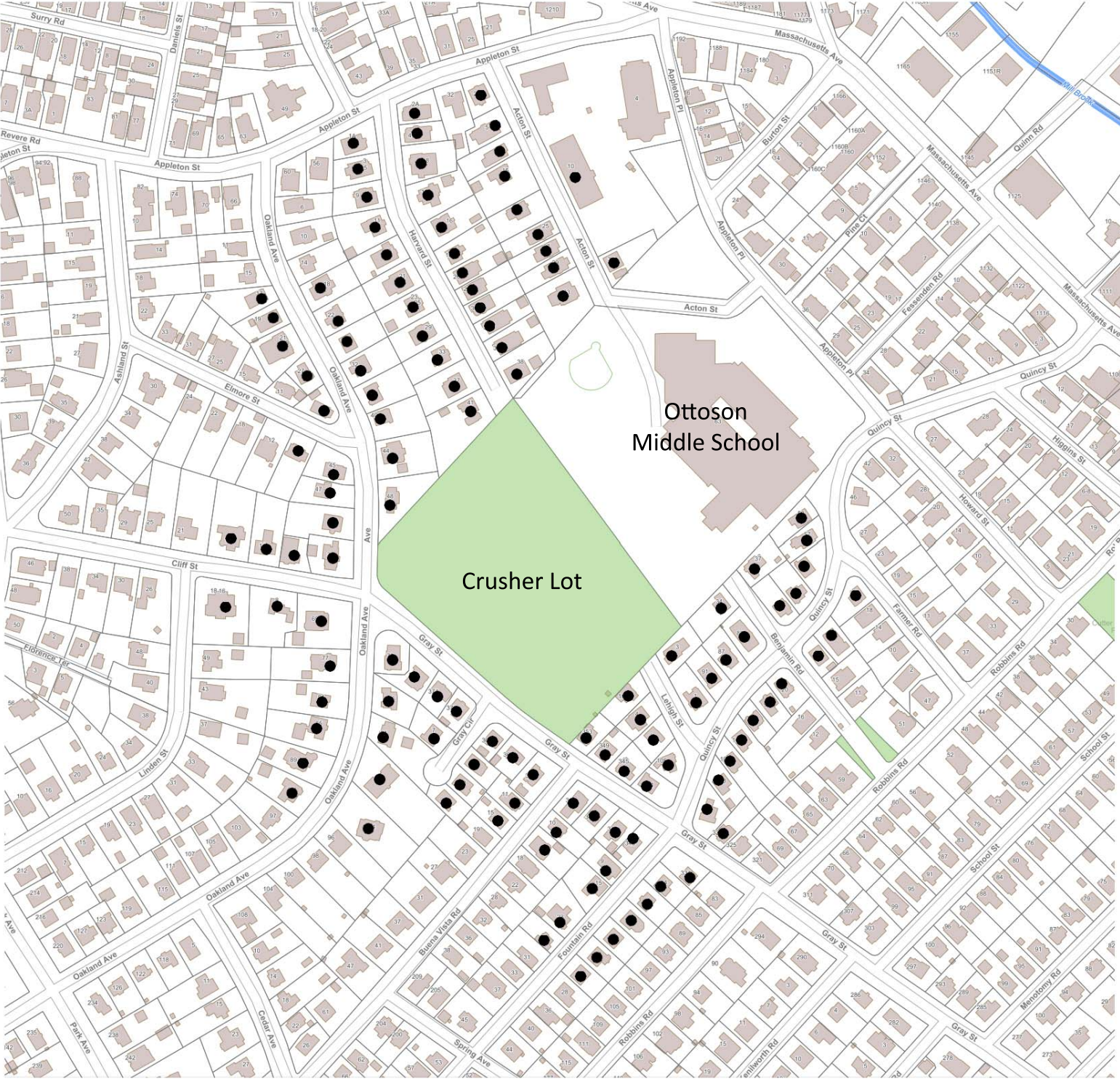


The Friends of the Crusher Lot is a newly-formed community organization created to preserve and protect the Crusher Lot woodland in Arlington, Massachusetts. We aim to keep the woods clean, safe and natural. We invite active membership in the organization and seek to represent the community of neighbors and users who care about the Crusher Lot.

*To learn more and stay informed, visit [friendsofthecrusher.org](http://friendsofthecrusher.org) and join us.*



# Flyer Distribution Map



Properties shown with ● were considered the most directly impacted by the proposed mountain bike park (with respect to property value, hydrology, noise, traffic, parking, emergency response and other quality of life issues).